



**Government of India
Ministry of Earth Sciences
India Meteorological Department**



Press Release

Date: 20th June, 2025

Time of Issue: 1400 hours IST

**Subject: (i) Southwest monsoon has further advanced into remaining parts of Bihar & East Uttar Pradesh and Madhya Pradesh, some parts of West Uttar Pradesh, most parts of Uttarakhand, many parts of Himachal Pradesh and some parts of Ladakh.
(ii) Heavy to very heavy rainfall at isolated places likely over Jharkhand on 20th, rainfall activity is likely to increase over Northwest India and Madhya Pradesh from 22nd June, 2025.
(iii) Heavy to very heavy rainfall likely to continue over Northeast India during next 7 days.**

Southwest Monsoon: (Annexure I):

- ❖ Southwest monsoon has further advanced into remaining parts of Bihar & East Uttar Pradesh and Madhya Pradesh, some parts of West Uttar Pradesh, most parts of Uttarakhand, many parts of Himachal Pradesh and some parts of Ladakh.
- ❖ The Northern Limit of Monsoon now passes through 25.0°N/60.0°E, 25.0°N/65.0°E, 25.5°N/70.0°E, Jaipur, Agra, Rampur, Dehradun, Shimla, Manali and 33.5°N/79.0°E.
- ❖ Conditions are favourable for further advance of Southwest monsoon over remaining parts of North Arabian Sea, some more parts of Rajasthan, remaining parts of West Uttar Pradesh, Uttarakhand, Himachal Pradesh and some parts of Jammu & Kashmir-Gilgit-Baltistan-Muzaffarabad, some more parts of Ladakh during next 2 days. Conditions are also becoming favourable for further advance of southwest monsoon over remaining parts of Jammu & Kashmir, Ladakh; some parts of Punjab & Haryana, Chandigarh & Delhi during subsequent 2 days.

Realised weather during past 24 hours till 0830 hours IST of today, the 20th June, 2025 (Annexure II):

- ❖ **Heavy to very heavy rainfall at some places with extremely heavy falls** recorded at isolated places over Gangetic West Bengal, Madhya Maharashtra.
- ❖ **Heavy to very heavy rainfall** recorded at isolated places over Konkan, Gujarat Region, Jharkhand, Arunachal Pradesh; **Heavy rainfall** at isolated places over Bihar, Odisha, Himachal Pradesh, East Uttar Pradesh, Assam & Meghalaya, Mizoram, Madhya Pradesh and Chhattisgarh.
- ❖ **Thunderstorm accompanied with Squally/Gusty winds with speed 40-60 kmph** at isolated places over Konkan & Goa, Madhya Maharashtra, Marathwada, Tamil Nadu, Odisha, Gangetic West Bengal, Assam & Meghalaya, Andaman & Nicobar Islands, Jharkhand, Bihar, Himachal Pradesh, West Uttar Pradesh, Kerala & Mahe, Rayalaseema, Telangana and Interior Karnataka.

For more details of realised weather, kindly refer Annexure II,

Detailed observations of Maximum Temperature during past 24 hours till 0830 hours IST of today are appended in **Annexure III.**

i. Weather Systems, Forecast and Warnings (refer to Annexure IV & V):

- ❖ The well marked low pressure area over northeast Jharkhand & neighbourhood weakened into a low pressure area and lay over south Bihar & neighbourhood at 0830 hrs IST of today, the 20th June 2025. The associated upper air cyclonic circulation in middle tropospheric levels tilting southwards with height. It is likely to move slowly northwestwards and weakened gradually during next 24 hours.
- ❖ An upper air cyclonic circulation lies over northeast Rajasthan & neighbourhood in middle tropospheric levels.
- ❖ A trough runs from northwest Uttar Pradesh to north Gujarat Region across the above cyclonic circulation over northeast Rajasthan & neighbourhood in lower tropospheric levels.
- ❖ An east-west trough runs from northwest Rajasthan to Meghalaya across the cyclonic circulation over northeast Rajasthan & neighbourhood, south Uttar Pradesh and the cyclonic circulation associated with the low-pressure area over south Bihar & neighbourhood, Gangetic West Bengal in lower tropospheric levels.

- ❖ Under the influence of these systems, the following weather is likely:

Weather Systems, Forecast and Warnings (refer to Annexure IV & V):

East & Central India:

- ✓ **Extremely heavy rainfall (>20 cm/24 hours) likely at isolated places over northwest Madhya Pradesh on 23rd June.**
- ✓ Isolated **heavy rainfall** also likely over Sub-Himalayan West Bengal & Sikkim during 20th-22nd, Madhya Pradesh during 20th-25th; Chhattisgarh, Jharkhand on 20th, 21st, during 24th-26th; Bihar during 20th-24th; Andaman & Nicobar Islands on 21st; Gangetic West Bengal on 22nd-26th; Odisha during 24th-26th June with **very heavy rainfall** over West Madhya Pradesh during 20th-26th; East Madhya Pradesh during 21st-23rd; Chhattisgarh, Jharkhand on 20th; Bihar on 22nd & 23rd June.
- ✓ Light/moderate rainfall at most/many places accompanied with **thunderstorm, lightning & gusty winds speed reaching 40-50 kmph** likely over Andaman & Nicobar Islands; Madhya Pradesh, Vidarbha, Chhattisgarh, Gangetic West Bengal, Bihar, Jharkhand, Odisha during 20th-26th June.

West India:

- ✓ Isolated **heavy rainfall** likely over Konkan & Goa, Madhya Maharashtra, Gujarat state during 20th-26th June with very heavy rainfall during 22nd-24th June.
- ✓ Light/moderate rainfall at most/many places likely over Gujarat State, Konkan & Goa, Madhya Maharashtra, Marathawada during 20th -26th June

Northwest India:

- ✓ Isolated **heavy rainfall** likely over Himachal Pradesh, Uttarakhand, Punjab, Haryana, Chandigarh, West Uttar Pradesh, East Rajasthan during 20th-26th; Rajasthan, East Uttar Pradesh during 20th-24th; Jammu-Kashmir-Ladakh-Gilgit-Baltistan-Muzaffarabad on 21st, 22nd, 25th & 26th with **very heavy rainfall** over East Uttar Pradesh during 20th-22nd; East Rajasthan on 20th & 23rd, south Haryana, West Uttar Pradesh on 22nd, Himachal Pradesh, Uttarakhand during 22nd-26th June.
- ✓ Light/moderate rainfall at most/many places accompanied with **thunderstorm, lightning & gusty winds speed reaching 40-50 kmph** likely over Northwest India during 20th-26th June.

Northeast India:

- ✓ Light/moderate rainfall at many/most places accompanied with **thunderstorm, lightning and isolated heavy to very heavy rainfall** likely to continue over Northeast India during next 7 days.

South Peninsular India:

- ✓ Isolated **heavy rainfall** likely over Kerala & Mahe during 22nd-26th; Coastal Karnataka on 20th and during 22nd-26th; North Interior Karnataka on 20th, during 23rd-26th; South Interior Karnataka during 23rd-26th June.
- ✓ **Strong surface winds** (speed reaching 40-60 kmph) very likely over Karnataka, Coastal Andhra Pradesh & Yanam, Telangana, Rayalaseema during 20th -24th June.
- ✓ Light/moderate rainfall at many/some places over Kerala & Mahe, Lakshadweep, Coastal Karnataka; isolated to scattered rainfall accompanied with isolated **thunderstorm, lightning** over Coastal Andhra Pradesh & Yanam, Telangana, Interior Karnataka during 20th-26th June.

Maximum Temperature Forecast:

- ❖ No significant change in maximum temperatures likely over rest parts of the country.

Hot & Humid Conditions warnings:

- ❖ **Hot & Humid conditions** very likely in isolated pockets of Tamil Nadu during 20th-22nd; Coastal Andhra Pradesh & Yanam, Rayalaseema on 20th & 21st June.

Fishermen Warnings:

- ❖ Fishermen are advised not to venture into:
Arabian Sea:
 - ❖ Fishermen are advised not to venture over central & adjoining north, south Arabian Sea, northeast Arabian Sea along and off Gujarat-Maharashtra coasts during 20th-24th June; along and off north Konkan coast on 23rd June); Fishermen are advised not to venture along and off the Somalia coast and adjoining sea areas, Oman and adjoining Yemen coast & adjoining sea areas during 20th-24th June

Bay of Bengal:

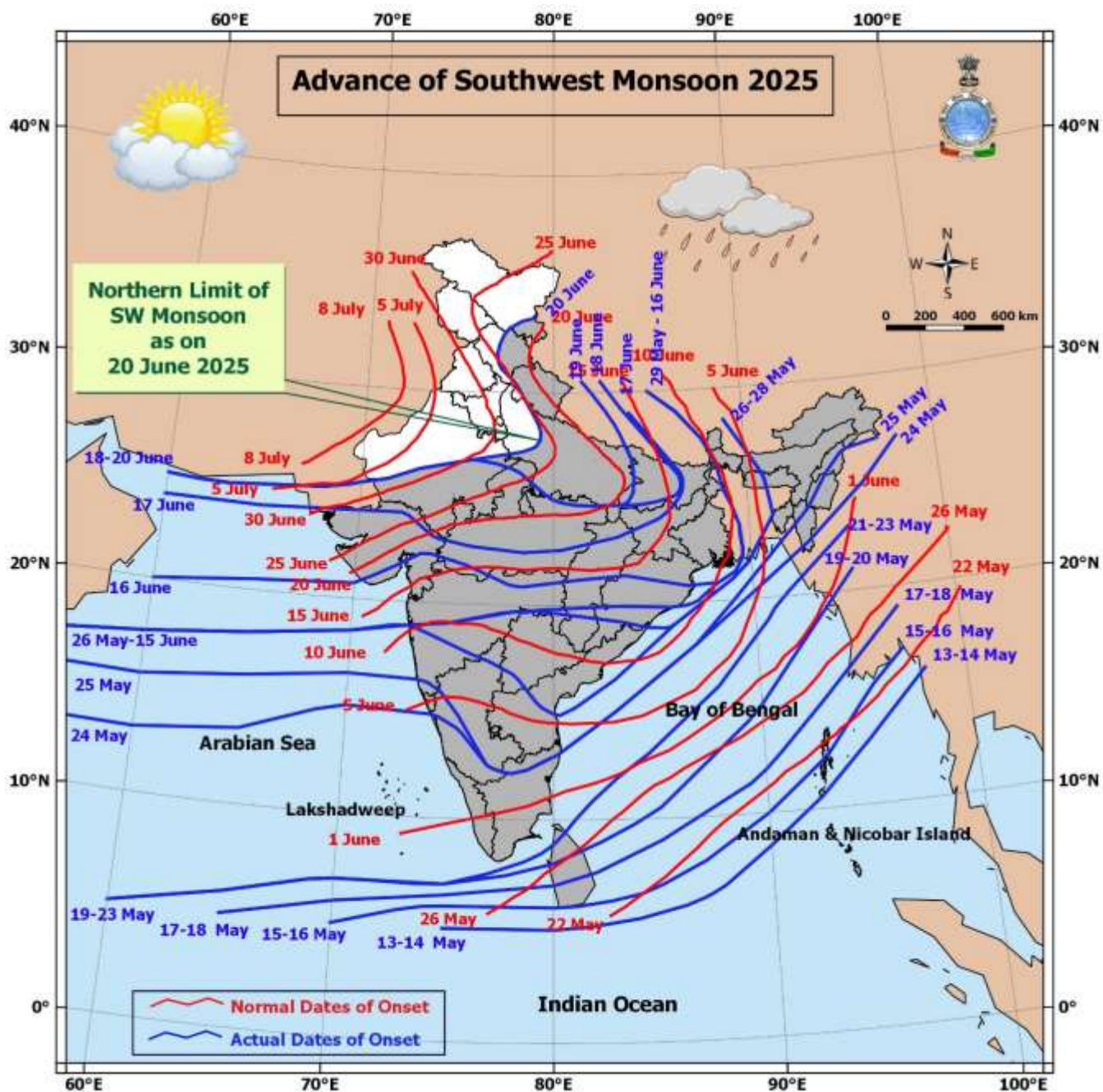
- ❖ Fishermen are advised not to venture along and off north and adjoining south Andhra Pradesh coast during 20th-23rd June), off Andhra Pradesh coast on 24th June; over some parts of westcentral Arabian Sea on 20th & 21st June; many parts of westcentral Arabian Sea on 22nd & 23rd June; most parts of central Bay of Bengal on 24th June; over some parts of southwest and adjoining southeast Bay of Bengal, Gulf of Mannar on 21st & 22nd June; many parts of south Bay of Bengal on 23rd & 24th June
- ❖ Fishermen are advised not to venture over the Andaman Sea from 22nd – 24th June.

ii. Weather conditions and forecast over Delhi/NCR during 20th June to 23rd June, 2025 (Annexure VI)

For more details, kindly refer National Weather Bulletin:

https://mausam.imd.gov.in/responsive/all_india_forecast_bulletin.php

For District wise warnings refer: <https://mausam.imd.gov.in/responsive/districtWiseWarningGIS.php>



Significant weather reported during past 24 hours till 0830 hours IST of today:**Rainfall recorded (in cm) reported during past 24 hours till 0830 hours IST of today, the 20th June:**

- ❖ **Gangetic West Bengal:** Purulia (dist Purulia) 21; Simula (dist Purulia) 12;
- ❖ **Jharkhand:** Mandar (dist Ranchi) 21; Bano Simdega Kvk AWS (dist Simdega) 18; Bariyatu (dist Latehar) 17; Ramgarh (dist Ramgarh) 16; Ramgarh(bdo) (dist Ramgarh) 14; Simdega (dist Simdega), Gola (dist Ramgarh) 13 Each; Mandu (dist Ramgarh), Patratu (dist Ramgarh) 12 Each; Gumla (dist Gumla), Bau Kanke (dist Ranchi), Anandpur (dist West Singhbhum) 11 Each; Raidih (dist Gumla), Hendigir (dist Hazaribag), Khalari (dist Ranchi) 10 Each; Palkot (dist Gumla), Gobindpur Dvc (dist Dhanbad), Ramgarh Dvc (dist Ramgarh), Lesliganj (dist Palamu), Mandu Dvc (dist Ramgarh) 9 Each;
- ❖ **Madhya Maharashtra:** Mahabaleshwar (dist Satara), Harsul - Fmo (dist Nashik) 21 Each; Lonavala ARG (dist Pune) 17; Igatpuri (dist Nashik) 13; Ozarkhedha - Fmo (dist Nashik) 12; Vadgaon Maval (dist Pune), Velhe (dist Pune), Trimbakshwar (dist Nashik) 11 Each; Radhanagari (dist Kolhapur) 10; Ajra (dist Kolhapur) 8; Paud Mulshi (dist Pune) 7;
- ❖ **Gujarat Region:** Daman (dist Daman) 18; Daman AWS (dist Daman) 16; Madhbun (dist Dadara & Nagar Haveli) 15; Vapi (dist Valsad), Daman Fmo (dist Daman) 14 Each; Silvassa (dist Dadara & Nagar Haveli) 13; Pardi (dist Valsad) 12; Umargam (dist Valsad), Kaprada (dist Valsad) 10 Each; Khergam (dist Navsari) 9; Waghai (dist Dangs), Khanvel (dist Dadara & Nagar Haveli) 8 Each; Dharampur (dist Valsad) 7;
- ❖ **Chhattisgarh:** Kunkuri (dist Jashpur) 16; Kusmi (dist Balrampur) 15; Samari (dist Balrampur) 12; Bagicha (dist Jashpur) 10; Manora (dist Jashpur) 9; Jashpurnagar (dist Jashpur), Sanna (dist Jashpur) 8 Each; Mukdega (dist Raigarh) 7;
- ❖ **Konkan & Goa:** Mokhedha - Fmo (dist Palghar), Jawhar (dist Palghar), Poladpur (dist Raigad) 15 Each; Mandangad (dist Ratnagiri) 13; Khed (dist Ratnagiri) 11; Sudhagad Pali (dist Raigad), Wada (dist Palghar) 10 Each; Murbad (dist Thane), Roha (dist Raigad), Mahad (dist Raigad), Mhasla (dist Raigad), Dapoli ARG (dist Ratnagiri), Wakwali ARG (dist Ratnagiri) 9 Each; Mangaon (dist Raigad), Khalapur (dist Raigad) 8 Each; Shahapur (dist Thane), Shriwardhan (dist Raigad), Talasari (dist Palghar), Vikramgad (dist Palghar), Savarde-arg (dist Ratnagiri), Lanja (dist Ratnagiri) 7 Each;
- ❖ **Arunachal Pradesh:** Mukto ARG (dist Tawang) 12;
- ❖ **East Uttar Pradesh:** Kakardharighat (dist Shrawasti) 12; Bara (dist Prayagraj), Shardanagar (dist Kheri) 11 Each; Fatehpur Tehsil (dist Barabanki) 10; Lucknow (Cr) (dist Lucknow), Kheri Lakhimpur (dist Kheri) 9 Each; Safipur (dist Unnao) 8; Lucknow (hs) (dist Lucknow), Bhatpurwaghat (dist Sitapur), Neemsar (dist Sitapur), Bighapur (dist Unnao) 7 Each;
- ❖ **East Rajasthan:** Banswara SR (dist Banswara), Shahpura (dist Bhilwara), Bijoliya SR (dist Bhilwara), Danpur (dist Banswara), Ramganjmandi SR (dist Kota) 11 Each; Nimbahera (dist Chittorgarh) 10; Todabhim (dist Karauli), Kesarpura SR (dist Banswara), Nainwa (dist Bundi), Shahabad (dist Baran) 9 Each; Bhungra SR (dist Banswara), Bari (dist Dholpur), Khushalgarh (dist Banswara), Hindaun (dist Karauli), Jhalarapatan SR (dist Jhalawar) 8 Each; Sangod (dist Kota) 7;
- ❖ **West Uttar Pradesh:** Maudaha (dist Hamirpur) 9;
- ❖ **Assam & Meghalaya:** Mawsynram (dist East Khasi Hills) 9; Udaipur (dist Tinsukia) 8;
- ❖ **West Madhya Pradesh:** Mandsaur-aws (dist Mandsaur), Sailana (dist Ratlam), Khalwa (dist Khandwa) 8 Each; Biaora (dist Rajgarh), Piploda (dist Ratlam), Pohri (dist Shivpuri), Sanjeet (dist Mandsaur), Bhavgarh (dist Mandsaur), Umarvan (dist Dhar) 7 Each;
- ❖ **East Madhya Pradesh:** Ajaigarh (dist Panna), Hanumana (dist Rewa) 8 Each; Singrauli-aws (dist Singrauli), Naigarhi (dist Rewa) 7 Each;
- ❖ **Himachal Pradesh:** Nahan (dist Sirmaur) 8;
- ❖ **Odisha:** Nawana (dist Mayurbhanj), Tangarpali (dist Sundargarh) 8 Each; Bamra (dist Sambalpur) 7.

Realised Gusty Winds (kmph) During Past 24hours ending at 0830 hrs IST of today the 20th June:

- ❖ **Madhya Maharashtra:** Karad (SATARA) 61 Km/h; Vilholi(NASHIK) 56Km/h; Mahabaleshwar (SATARA) 52 Km/h;
- ❖ **Marathwada:** Tulga (Dharashiv) 57 Km/h; Chh Sambhaji Nagar 57 Km/h; Beed (Ambejogai)- 50 Km/h;
- ❖ **Konkan & Goa:** Alibag(RAIGAD) 56 Km/h; Dapoli (Ratnagiri) 52 Km/h; Santacruz (MUMBAI) 52 Km/h;
- ❖ **TN & Puducherry:** VEDASANDUR 52; NATHAM_ISRO 46; VAMBAN_KVK 46; TENKASI 46; THIRUCHENDUR 41; TIRUR_KVK 39; KADAVUR_TALUK_OFFICE 41;
- ❖ **Odisha:** Ranital_AMFU 48 km/h; Jagatsinghpur_KVK 45km/h; Cuttack_KVK 41km/h; FM_University 39 km/h; Kendrapara 35 km/h; Bhubaneswar_AMFU 35 km/h;
- ❖ **Gangetic West Bengal:** Sagar Island 46; IMD_MO_Digha 41 km/h; Gangasagar 41 km/h; Canning 39 km/h; Nimpith 37 km/h; 31 km/h; Bijpur 32 km/h;
- ❖ **Assam & Meghalaya:** JNS COLLEGE 44; GOSAIGAON 33,
- ❖ **A&N Islands:** Sri Vijayapuram 43;
- ❖ **Jharkhand:** Chatra_KVK 41 km/h; DIYAKEL-KHUNTI_KVK 39 km/h; SARAIKELA 35 km/h; NETARHAT 35 km/h;
- ❖ **Bihar:** SUKHET 46 km/h; IIT_Patna 43 km/h; PUSA_AWS400 44.4 km/h; SAMASTIPUR 44 km/h; SARAIYA_KVK 39 km/h; Gopalganj 37.0 km/h; ARRABARI 37.0 km/h; ARARIA_KVK 37.0 km/h; Rajgir 37.0 km/h; SUPAUL_AWS400 37.0 km/h; Patna 35 km/h; Madhepura 35 km/h; Katihar_KVK 35 km/h; AGRICULTURE_UNIVERSITY_KVK 32 km/h; AURANGABAD_KVK 32 km/h; EAST CHAMPARAN_KVK 33 km/h;
- ❖ **Himachal Pradesh:** BAJAURA-40;
- ❖ **West Uttar Pradesh:** AGRA(IAF)-41;

Temperature observations during past 24 hours till 0830 hours IST of today:

- ❖ Yesterday, Maximum temperatures were in the range of 38-43°C over at isolated places over Rajasthan, East Uttar Pradesh; at isolated places over East Madhya Pradesh, Tamil Nadu, Puducherry & Karaikal; in the range of 33-38°C over many places over Punjab, Coastal Andhra Pradesh & Yanam, Rayalaseema; at a few places over Himachal Pradesh, Haryana-Chandigarh-Delhi, Jammu-Kashmir-Ladakh-Gilgit-Baltistan-Muzaffarabad; at isolated places over West Uttar Pradesh, Bihar, Saurashtra & Kutch, Odisha, Telangana and below 33 °C elsewhere in the remaining part of the country. **Yesterday. The highest maximum temperature of 44.6°C is reported at Jaisalmer (West Rajasthan).**
- ❖ Maximum Temperature Departures (as on 1-06-2025): Maximum Temperatures were markedly above normal (> 5.1°C) at few places over Jammu-Kashmir-Ladakh-Gilgit-Baltistan-Muzaffarabad; appreciably above normal (3.1°C to 5.0°C) at isolated places over Odisha, Himachal Pradesh, West Rajasthan, East Madhya Pradesh and Tamil Nadu, Puducherry & Karaikal; above normal (1.6°C to 3.0°C) at few places over Coastal Karnataka; at isolated places over Assam & Meghalaya, East Uttar Pradesh, Konkan & Goa and Kerala & Mahe; near normal (-1.5°C to 1.5°C) at many places over Nagaland, Manipur, Mizoram & Tripura, Uttarakhand and North Interior Karnataka; at most places over Punjab, Coastal Andhra Pradesh & Yanam, Telangana, Rayalaseema, South Interior Karnataka and Lakshadweep; at few places over Andaman & Nicobar Islands, Arunachal Pradesh, West Uttar Pradesh, Haryana-Chandigarh-Delhi and Saurashtra & Kutch; at isolated places over Gangetic West Bengal and Madhya Maharashtra.

Fig.1: Maximum Temperatures

Fig.2: Departure of Maximum Temperatures

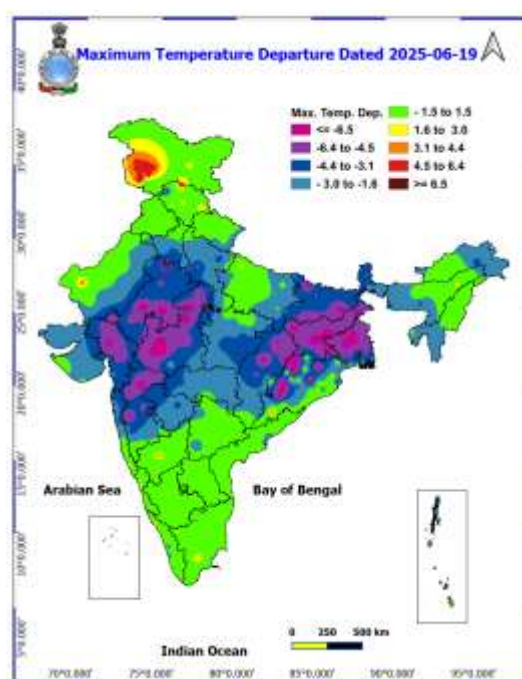
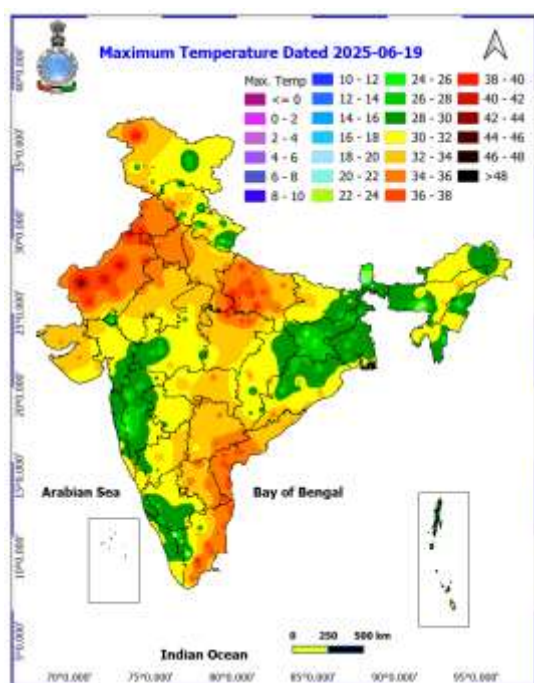
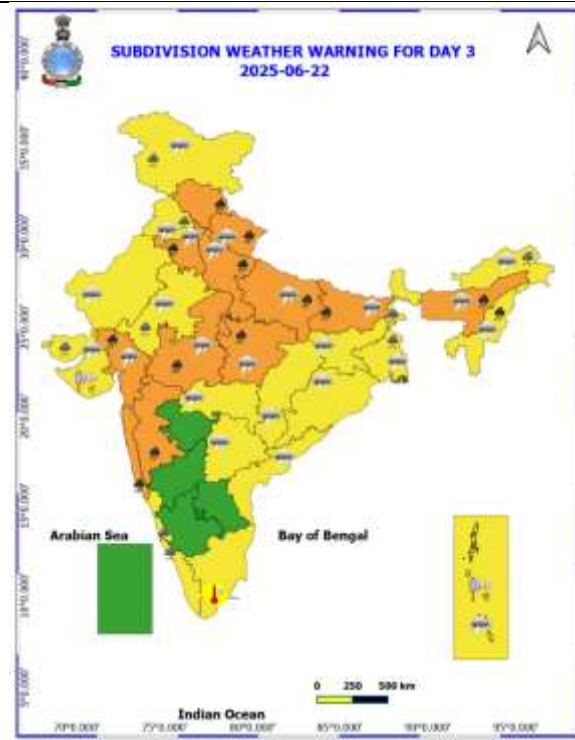
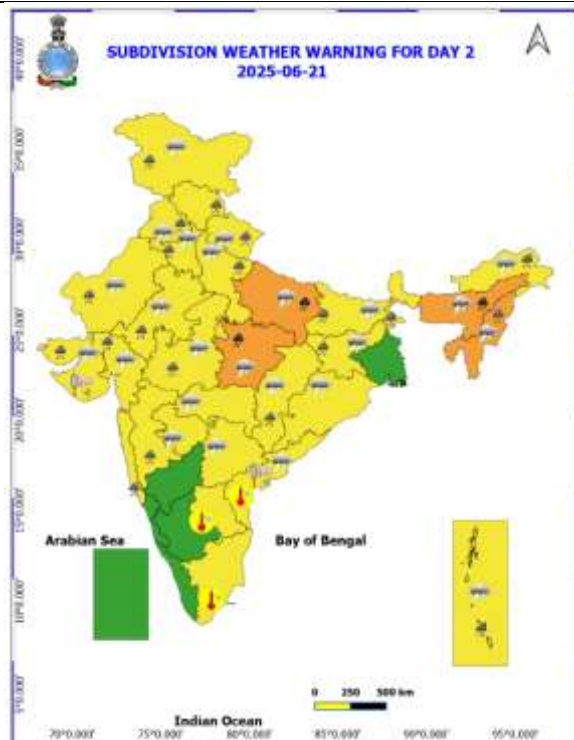
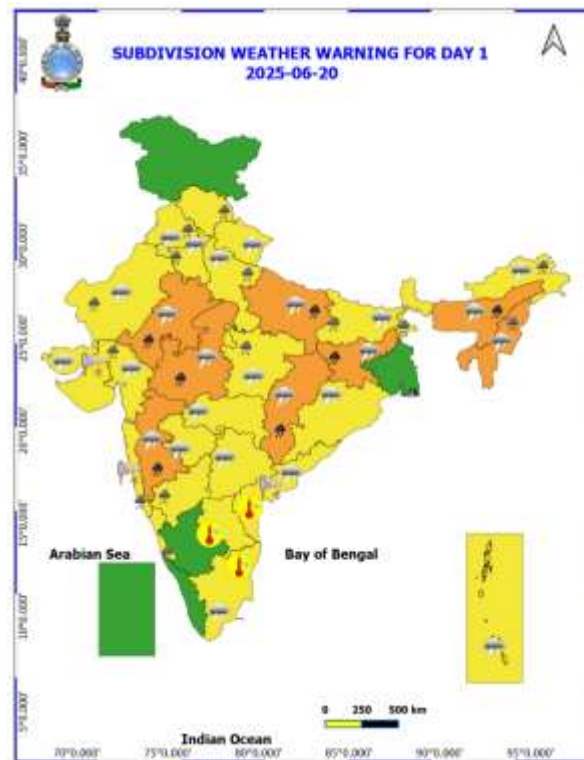
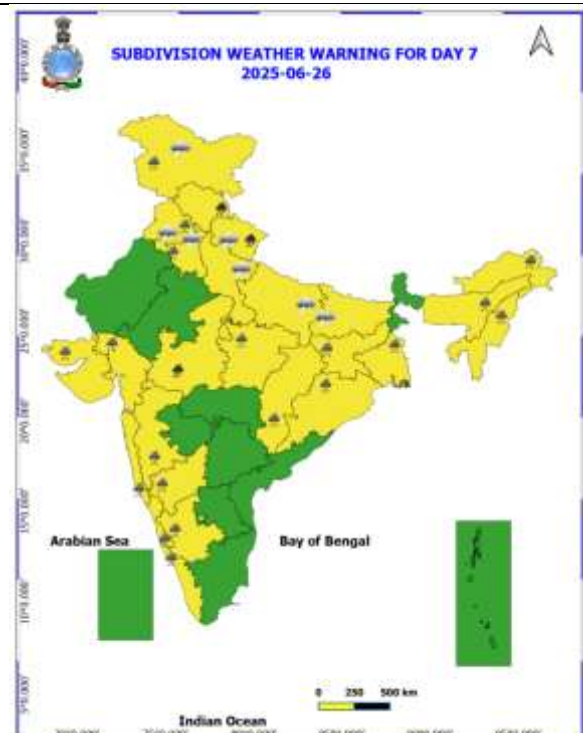
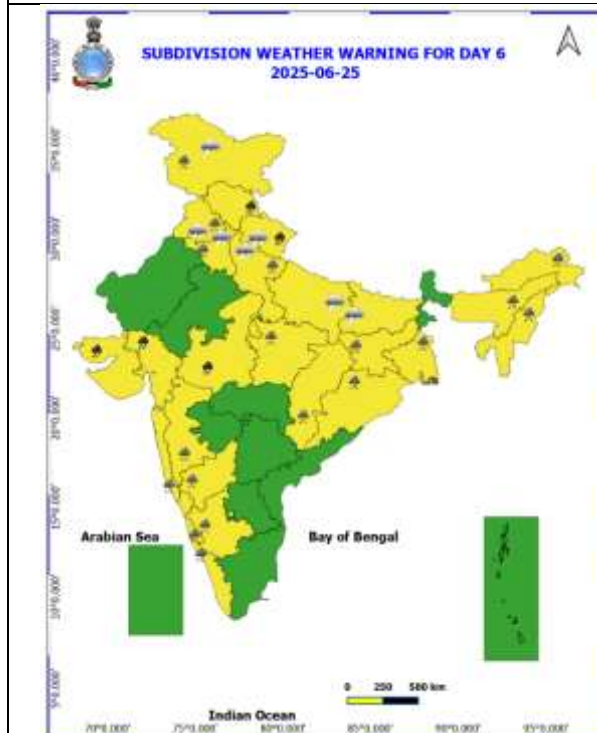
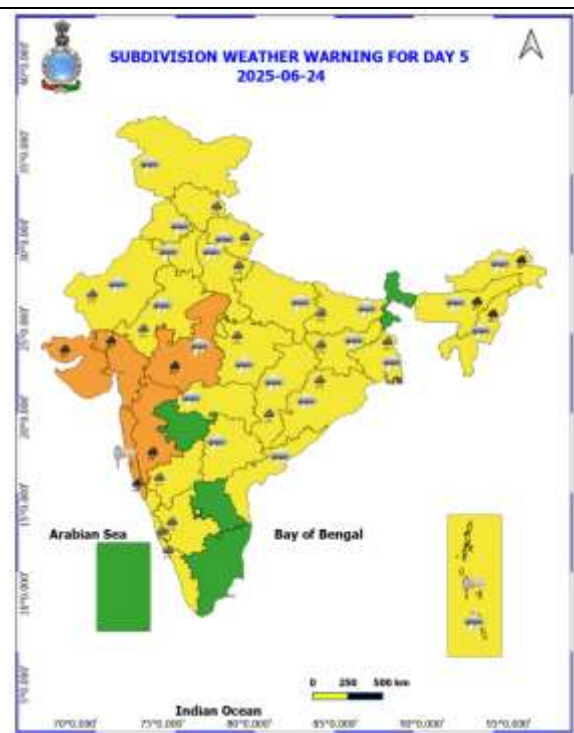
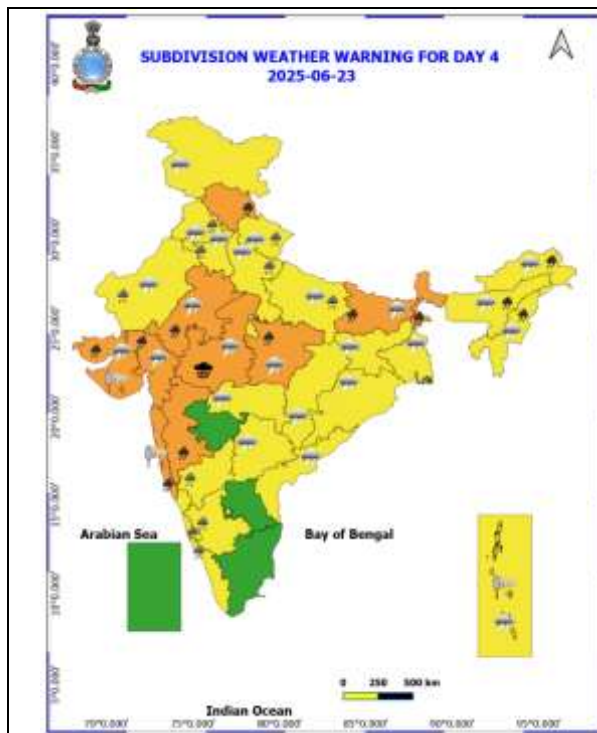


Table-1								
7 Days Rainfall Forecast								
S.No.	Subdivision	20- Jun	21- Jun	22- Jun	23- Jun	24- Jun	25- Jun	26- Jun
		Day 1	Day 2	Day 3	Day 4	Day 5	Day 6	Day 7
1	ANDAMAN & NICOBAR ISLANDS	WS	WS	WS	WS	FWS	FWS	FWS
2	ARUNACHAL PRADESH	FWS	FWS	WS	WS	FWS	FWS	FWS
3	ASSAM & MEHGHALAYA	WS	WS	WS	WS	WS	FWS	FWS
4	NAGALAND, MANIPUR, MIZORAM AND TRIPURA	FWS	WS	WS	WS	WS	WS	WS
5	SUB HIMALAYAN WEST BENGAL & SIKKIM	FWS	FWS	WS	WS	WS	FWS	FWS
6	GANGETIC WEST BENGAL	FWS	SCT	WS	FWS	FWS	WS	WS
7	ODISHA	FWS	SCT	SCT	SCT	FWS	FWS	WS
8	JHARKHAND	WS	FWS	FWS	FWS	FWS	WS	WS
9	BIHAR	SCT	FWS	FWS	FWS	SCT	SCT	SCT
10	EAST UTTAR PRADESH	FWS	WS	WS	WS	FWS	FWS	SCT
11	WEST UTTAR PRADESH	FWS	FWS	WS	WS	FWS	FWS	FWS
12	UTTARAKHAND	FWS	WS	WS	FWS	FWS	WS	WS
13	HARYANA, CHANDIGARH & DELHI	FWS	FWS	WS	WS	SCT	FWS	FWS
14	PUNJAB	SCT	SCT	WS	FWS	SCT	FWS	FWS
15	HIMACHAL PRADESH	FWS	FWS	WS	WS	FWS	WS	WS
16	JAMMU AND KASHMIR AND LADAKH	ISOL	SCT	WS	FWS	FWS	WS	WS
17	WEST RAJASTHAN	SCT	SCT	ISOL	ISOL	SCT	ISOL	ISOL
18	EAST RAJASTHAN	FWS	SCT	SCT	FWS	FWS	SCT	SCT
19	WEST MADHYA PRADESH	FWS	FWS	FWS	FWS	FWS	FWS	WS
20	EAST MADHYA PRADESH	WS	WS	WS	WS	WS	WS	WS
21	GUJRAT REGION	FWS	WS	WS	WS	FWS	FWS	FWS
22	SAURASHTRA & KUTCH	FWS	FWS	WS	FWS	FWS	FWS	FWS
23	KONKAN & GOA	WS	WS	WS	WS	WS	WS	WS
24	MADHYA MAHARASHTRA	SCT	ISOL	ISOL	ISOL	ISOL	ISOL	ISOL
25	MARATHWADA	ISOL	ISOL	ISOL	ISOL	ISOL	ISOL	ISOL
26	VIDARBHA	SCT	ISOL	ISOL	ISOL	SCT	FWS	FWS
27	CHHATTISGARH	FWS	SCT	SCT	ISOL	ISOL	FWS	FWS
28	COASTAL ANDHRA PRADESH	ISOL	ISOL	ISOL	ISOL	ISOL	ISOL	ISOL
29	TELANGANA	ISOL	ISOL	ISOL	ISOL	ISOL	ISOL	ISOL
30	RAYALASEEMA	ISOL	ISOL	ISOL	ISOL	ISOL	ISOL	ISOL
31	TAMILNADU & PUDUCHERRY	ISOL	ISOL	ISOL	ISOL	ISOL	ISOL	ISOL
32	COSTAL KARNATAKA	WS	WS	WS	WS	WS	WS	WS
33	NORTH INTERIOR KARNATAKA	SCT	ISOL	ISOL	ISOL	ISOL	ISOL	SCT
34	SOUTH INTERIOR KARNATAKA	ISOL	ISOL	ISOL	ISOL	ISOL	SCT	FWS
35	KERALA AND MAHE	FWS	FWS	WS	WS	WS	WS	WS
36	LAKSHADWEEP	FWS	FWS	FWS	FWS	FWS	FWS	FWS

- As the lead period increases forecast accuracy decreases.





- Action may be taken based on ORANGE AND REDCOLOUR warnings.
- Vulnerable regions likely urban and hilly areas action may be initiated for heavy rainfall warning.
- As the lead period increases forecast accuracy decreases.

Detailed districtwise Multi Hazard weather warning for next five days available at
<https://mausam.imd.gov.in/responsive/districtWiseWarningGIS.php>

Weather forecast over Delhi/NCR during 20th to 23th June 2025**Past Weather:**

There has been a fall in the minimum temperature up to 1°C and rise in the maximum temperature up to 1 - 2°C over Delhi/NCR during the past 24 hours. The maximum and minimum temperatures over Delhi were around 34 to 36°C and 24 to 27° respectively. The minimum temperature was below normal up to 1 - 4°C and the maximum temperature was below normal up to 2 - 4°C. Generally cloudy sky conditions with predominant surface wind from the southeast direction with wind speeds up to 16 kmph prevailed during the past 24 hours. Partly cloudy sky conditions with wind speed less than 15 kmph from the east direction prevailed over the region in the forenoon today.

Weather Forecast:

20.06.2025: Generally cloudy sky. Very light to light rain/thunderstorm/lighting with gusty winds 30 - 40 kmph temporary reaching 50 kmph during thunderstorm towards evening/night. The maximum temperatures over Delhi are likely to be in the range of 35 to 37°C. The maximum temperature will be below normal up to 1 - 3°C. The predominant surface wind will likely be from the southeast direction with a wind speed of less than 25 kmph in the afternoon. The wind speed will gradually decrease becoming 10-15 kmph from the southeast direction during evening and night.

21.06.2025: Generally cloudy sky. Very light to light rain/thunderstorm/lighting accompanied with gusty winds 30 - 40 kmph temporary reaching 50 kmph during thunderstorm. The maximum and minimum temperatures over Delhi are likely to be in the range of 35 to 37°C and 26 to 28°C respectively. The minimum temperature will be near normal and the maximum temperature will be below normal up to 1 - 3°C. The predominant surface wind will likely be from the southeast direction with a wind speed of less than 15 kmph during the morning hours. The wind speed will gradually decrease becoming 10-12 kmph from the southeast direction in the afternoon. It will increase becoming less than 15 kmph from the southeast direction during evening and night.

22.06.2025: Generally cloudy sky. Moderate to heavy rain/thunderstorm/lighting accompanied with gusty winds 30 - 40 kmph temporary reaching 50 kmph during thunderstorm. The maximum and minimum temperatures over Delhi are likely to be in the range of 34 to 36°C and 26 to 28°C respectively. The minimum temperature will be below normal up to 1 - 2°C and the maximum temperature will be below normal up to 2 - 4°C. The predominant surface wind will likely be from the southwest direction with a wind speed of less than 15 kmph during the morning hours. The wind speed will gradually increase becoming less than 25 kmph from the southeast direction in the afternoon. It will decrease to less than 15 kmph from the northeast direction during the evening and night.

23.06.2025: Generally cloudy sky. Moderate to heavy rain/thunderstorm/lighting accompanied with gusty winds 30 - 40 kmph temporary reaching 50 kmph during thunderstorm. The maximum and minimum temperatures over Delhi are likely to be in the range of 34 to 36°C and 25 to 27°C respectively. The minimum temperature will be below normal up to 1 - 3°C and the maximum temperature will be below normal up to 2 - 4°C. The predominant surface wind will likely be from the southeast direction with a wind speed of less than 25 kmph during the morning hours. The wind speed will gradually decrease becoming less than 16 kmph from the southeast direction in the afternoon. It will increase to less than 25 kmph from the southeast direction during the evening and night.

Impact expected and Action Suggested due to thunderstorm with lightning/gusty winds:

- Be cautious and take precautionary measures, though there is the likelihood of thunderstorm/lighting and gusty winds (speed 40 – 50 kmph) temporarily reaching to 60 kmph during thunderstorm with dust rising surface winds.
- Breaking of tree branches, uprooting of large avenue trees, Large dead limbs blown from trees, Damage to standing crops, Minor to major damage to power and communication lines due to breaking of branches, Partial damage to vulnerable structures due to strong winds, Loose objects may fly.
- People are advised to keep a watch on the weather for worsening conditions and be ready to move to safer places accordingly, stay indoors, close windows & doors and avoid travel if possible, take safe shelters; do not take shelter under trees, do not lie on concrete floors and do not lean against concrete walls, unplug electrical/ electronic appliances, immediately get out of water bodies, keep away from all the objects that conduct electricity.

Impact & Action Suggested due to extremely heavy falls/ very heavy rainfall:

- ✓ **Extremely heavy rainfall (>20 cm/24 hours) likely at isolated places over northwest Madhya Pradesh on 23rd June.**
- ✓ **Very heavy rainfall** over West Madhya Pradesh during 20th-26th; East Madhya Pradesh during 21st-23rd; Chhattisgarh, Jharkhand on 20th; Bihar on 22nd & 23rd, Konkan & Goa, Madhya Maharashtra, Nagaland, Manipur, Mizoram & Tripura during 22nd-24th, Arunachal Pradesh on 23rd & 24th; Assam & Meghalaya during 20th-24th; East Uttar Pradesh during 20th-22nd; East Rajasthan on 20th & 23rd, south Haryana, West Uttar Pradesh on 22nd, Himachal Pradesh, Uttarakhand during 22nd-26th June.

Impact Expected

- Localized Flooding of roads, water logging in low lying areas and closure of underpasses mainly in urban areas of the above region.
- Occasional reduction in visibility due to heavy rainfall.
- Disruption of traffic in major cities due to water logging in roads leading to increased travel time.
- Minor damage to kutch roads.
- Possibilities of damage to vulnerable structure.
- Localized Landslides/Mudslides/landslips/mudslips/landsinks/mudsinks.
- Damage to horticulture and standing crops in some areas due to inundation.
- It may lead to riverine flooding in some river catchments (for riverine flooding please visit Web page of CWC)

Action Suggested

- Check for traffic congestion on your route before leaving for your destination.
- Follow any traffic advisories that are issued in this regard.
- Avoid going to areas that face the water logging problems often.
- Avoid staying in vulnerable structure.

Agromet advisories for likely impact of Heavy / Heavy to Very Heavy / Extremely Heavy Rainfall (Based on the IBF and advisories issued by different AMFUs)

- In **Gangetic West Bengal**, ensure proper drainage in already sown rice nurseries, fields of sesame, jute and groundnut to prevent waterlogging. Cover the young seedlings of *khari* rice with plastic sheets or agro-shade nets to protect them from heavy rains.
- In **Sub-Himalayan West Bengal**, maintain proper drainage channels in rice nurseries and fields of jute and ginger to avoid water stagnation.
- In **Jharkhand**, postpone sowing of rice nurseries, maize and green gram. Make necessary arrangements to drain out excess water from already sown maize fields, rice and vegetable nurseries. Postpone harvesting of summer maize and keep the already harvested produce in safe place.
- In **South Gujarat**, postpone nursery sowing of rice. Ensure proper drainage facilities in already sown rice nurseries, sugarcane fields, banana and mango plantations to prevent waterlogging. Provide support to sugarcane and banana to prevent lodging.
- In **Rajasthan**, store the harvested green gram and vegetables in safe place.
- In **East Uttar Pradesh**, make necessary arrangement to protect paddy nurseries from the adverse impacts of heavy rainfall.
- In **Konkan & Goa** make arrangement to drain out excess water from rice nurseries, fields of finger millet, groundnut and orchards to prevent water logging.
- In **ghat areas of Madhya Maharashtra**, drain out excess water from rice nurseries and banana plantations.
- In **North Chhattisgarh**, postpone nursery sowing of rice and ensure proper drainage in already sown rice nurseries.
- In **Assam**, keep the harvested produce of sesame, foxtail millet, *Boro* rice, banana and citrus at safer places. Ensure proper drainage in *Sali* rice nursery, maize and sugarcane fields, arecanut and coconut plantations to prevent water logging.
- In **Meghalaya**, postpone nursery sowing of rice especially in valleys. Ensure proper drainage in the fields of maize, ginger, French bean, cowpea, vegetables and around rice nurseries to prevent water logging. Provide strong bamboo stakes or trellis support to cow pea, cucumber and bottle gourd to prevent vines from trailing on wet ground. Provide support to banana plant to prevent lodging.

- In **Arunachal Pradesh**, keep the harvested produce of soybean and vegetables such as chilli and okra at a safer place. Ensure proper drainage in rice nurseries, kiwi and apple orchards to avoid water logging.
- In **Tripura**, use sandbags to protect seedbeds of *Aus* paddy from waterlogging. Provide support to banana, papaya and young fruit plants to prevent lodging.

Livestock / Fishery

- Keep the animals inside the shed during heavy rainfall and provide them balanced feed.
- Store feed and fodder in a safe place to prevent spoilage.
- Construct an outlet with proper netting around the ponds to drain out excess water, thereby preventing fish from escaping in case of overflow.

Agromet advisories for likely impact of Thunderstorm / Gusty Winds / Squally Winds

(Based on the IBF and advisories issued by different AMFUs)

- Provide mechanical support to horticultural crops and staking or support to vegetables and young fruit plants / fruit-bearing plants to avoid lodging due to strong winds.

Legends & abbreviations:

- ❖ **Heavy Rain:**64.5-115.5mm; **Very Heavy Rain:**115.6-204.4mm; **Extremely Heavy Rain:** >204.4mm.
- ❖ **Obsy:** Observatory; Automatic Weather Station; **ARG:** Automatic Rain Gauge; **dist:** District; **NH:** National Highway; **KVK:** Krishi Vigyan Kendra; **DVC:** Damodar Valley Corporation; **PTO:** Part Time Office, **Aero:** Aerodrome, **IAF:** Indian Air Force.
- ❖ **Region wise classification of meteorological Sub-Divisions:**
 - **Northwest India:** Western Himalayan Region (Jammu-Kashmir-Ladakh-Gilgit-Baltistan-Muzaffarabad, Himachal Pradesh and Uttarakhand); Punjab, Haryana-Chandigarh-Delhi; West Uttar Pradesh, East Uttar Pradesh, West Rajasthan and East Rajasthan.
 - **Central India:** West Madhya Pradesh, East Madhya Pradesh, Vidarbha and Chhattisgarh.
 - **East India:** Bihar, Jharkhand, Sub-Himalayan West Bengal & Sikkim; Gangetic West Bengal, Odisha and Andaman & Nicobar Islands.
 - **Northeast India:** Arunachal Pradesh, Assam & Meghalaya and Nagaland, Manipur, Mizoram & Tripura.
 - **West India:** Gujarat Region, Saurashtra & Kutch, Konkan & Goa, Madhya Maharashtra and Marathawada.
 - **South India:** Coastal Andhra Pradesh & Yanam, Telangana, Rayalaseema, Coastal Karnataka, North Interior Karnataka, South Interior Karnataka, Kerala & Mahe, Tamil Nadu, Puducherry & Karaikal and Lakshadweep.

LEGENDS

1. अंडमान और निकोबार द्वीपसमूह

2. अरुणाचल प्रदेश

3. असम और मेघालय

4. नागालैंड, मणिपुर, मिजोरम और त्रिपुरा

5. उप-हिमालयी पश्चिम बंगाल और सिक्किम

6. गंगीय पश्चिम बंगाल

7. ओडिशा

8. झारखंड

9. बिहार

10. पूर्वी उत्तर प्रदेश

11. पश्चिम उत्तर प्रदेश

12. उत्तराखंड

13. हरियाणा, चंडीगढ़ और दिल्ली

14. पंजाब

15. हिमाचल प्रदेश

16. जम्मू और कश्मीर और लद्दाख

17. पश्चिम राजस्थान

18. पूर्वी राजस्थान

19. पश्चिम मध्य प्रदेश

20. पूर्वी मध्य प्रदेश

21. गुजरात

22. सौराष्ट्र

23. कोंकण और गोवा

24. मध्य महाराष्ट्र

25. मराठवाड़ा

26. विदर्भ

27. छत्तीसगढ़

28. तटीय आंध्र प्रदेश और यनम

29. तेलंगाना

30. रायलसीमा

31. तमिलनाडु, पुडुचेरी और कराईकल

32. तटीय कर्नाटक

33. आंतरिक उत्तरी कर्नाटक

34. आंतरिक दक्षिणी कर्नाटक

35. केरल और माहे

36. लक्षद्वीप



1. Andaman & Nicobar Islands

2. Arunachal Pradesh

3. Assam & Meghalaya

4. Nagaland, Manipur, Mizoram & Tripura

5. Sub-Himalayan West Bengal & Sikkim

6. Gangetic West Bengal

7. Odisha

8. Jharkhand

9. Bihar

10. East Uttar Pradesh

11. West Uttar Pradesh

12. Uttarakhand

13. Haryana, Chandigarh & Delhi

14. Punjab

15. Himachal Pradesh

16. Jammu & Kashmir and Ladakh

17. West Rajasthan

18. East Rajasthan

19. West Madhya Pradesh

20. East Madhya Pradesh

21. Gujarat

22. Saurashtra

23. Konkan & Goa

24. Madhya Maharashtra

25. Marathwada

26. Vidarbha

27. Chhattisgarh

28. Coastal Andhra Pradesh & Yanam

29. Telangana

30. Rayalaseema

31. Tamilnadu, Puducherry & Karaikal

32. Coastal Karnataka

33. North Interior Karnataka

34. South Interior Karnataka

35. Kerala & Mahe

36. Lakshadweep

SPATIAL DISTRIBUTION (% of Stations reporting)

% Stations	Category	% Stations	Category
76-100	Widespread (WS/Most Places)	26-50	Scattered (SCT/A Few Places)
51-75	Fairly Widespread (FWS/Many Places)	1-25	Isolated (ISOL)



Fog



Heavy Rain



Very Heavy Rain



Extremely Heavy Rain



Thunder & Lightning



Hailstorm



Dust Raising Winds



Heavy Snow



Dust Storm



Heat Wave



Warm Night



Hot Day



Hot & Humid



Strong Surface Winds



Cold Wave



Cold Day



Ground Frost

COLOUR CODED WARNING

No Warning (No Action)

Watch (Be Aware)

Alert (Be Prepared To Take Action)

Warning (Take Action)

Probabilistic Forecast

Terms	Probability of Occurrence (%)
Unlikely	< 25
Likely	25 - 50
Very Likely	50 - 75
Most Likely	> 75

* Red colour warning does not mean "Red Alert", Red colour warning means "Take Action".

Forecast and Warning for any day is valid from 0830 hours IST of day till 0830 hours IST of next day.

For more details, kindly visit <https://mausam.imd.gov.in> or contact: 011-2434-4599

(Service to the Nation since 1875)

DEFINITION/CRITERIA

Rain/ Snow *

Heavy: 64.5 to 115.5 mm/cm *
Very Heavy: 115.6 to 204.4 mm/cm *
Extremely Heavy: > 204.4 mm/cm *

Heat Wave

When maximum temperature of a station reaches $\geq 40^{\circ}\text{C}$ for plains and $\geq 30^{\circ}\text{C}$ for hilly regions

(a) Based on Departure from normal

Heat Wave: Maximum Temperature Departure from normal 4.5°C to 6.4°C .

Severe Heat Wave: Maximum Temperature Departure from normal $\geq 6.5^{\circ}\text{C}$

(b). Based on Actual maximum temperature

Heat Wave: When actual maximum temperature $\geq 45^{\circ}\text{C}$.

Severe Heat Wave: When actual maximum temperature $\geq 47^{\circ}\text{C}$.

(c). Criteria for heat wave for coastal stations

When maximum temperature departure is $> 4.5^{\circ}\text{C}$ from normal. Heat Wave may be described provided maximum temperature $\geq 37^{\circ}\text{C}$.

Warm Night

When maximum temperature remains 40°C

Warm Night: When minimum temperature departure 4.5°C to 6.4°C .

Severe Warm Night: When minimum temperature departure $> 6.4^{\circ}\text{C}$.

Cold Wave

When minimum temperature of a station $\leq 10^{\circ}\text{C}$ for plains and $\leq 0^{\circ}\text{C}$ for hilly regions.

(a). Based on departure

Cold Wave: Minimum Temperature Departure from normal -4.5°C to -6.4°C .

Severe Cold Wave: Minimum Temperature Departure from normal $\leq -6.5^{\circ}\text{C}$

(b) Based on actual Minimum Temperature (for Plains only)

Cold Wave: When Minimum Temperature is $\leq 4.0^{\circ}\text{C}$

Severe Cold Wave: When Minimum Temperature is $\leq 2.0^{\circ}\text{C}$

(c) For Coastal Stations

When Minimum Temperature departure is $\leq -4.5^{\circ}\text{C}$ & actual Minimum Temperature is $\leq 15^{\circ}\text{C}$

Cold Day

When minimum temperature of a station $\leq 10^{\circ}\text{C}$ for plains and $\leq 0^{\circ}\text{C}$ for hilly regions

Based on departure

Cold Day: Maximum Temperature Departure from normal -4.5°C to -6.4°C .

Severe Cold Day: Maximum Temperature Departure from normal $\leq -6.5^{\circ}\text{C}$

Fog

Phenomenon of small droplets suspended in air and the horizontal visibility $< 1\text{km}$

Moderate Fog: When the visibility between 500-200 metres

Dense Fog: when the visibility between 50- 200 metres

Very Dense Fog: when the visibility < 50 metres

Thunderstorm

Sudden electrical discharges manifested by a flash of light (Lightning) and a sharp rumbling sound (thunder)

Dust/Sand Storm

An ensemble of particles of dust or sand energetically lifted to great heights by a strong and turbulent wind.

Frost

Ice deposits on ground

Air temperature $\leq 4^{\circ}\text{C}$ (over Plains)

Squall

A strong wind that rises suddenly, lasts for atleast 1 minute.

Moderate: Wind speed 52-61 kmph

Severe: Wind speed 62-67 kmph

Very Severe: Wind speed > 67 kmph

Sea State

Effect of various waves in the sea over specific area

Rough to very rough: Wind speed 41-62 kmph (22-33 knots) & Wave height 2.5-6 metre

High to very high: Wind speed 63-117 kmph (34-63 knots) & Wave height 6-14 metre

Phenomenal: Wind speed > 117 kmph (> 63 knots) & Wave height > 14 metre

Cyclone

Cyclonic Storm: Wind speed 62-87 kmph (34-47 knots)

Severe Cyclonic Storm: Wind speed 88-117 kmph (48-63 knots)

Very Severe Cyclonic Storm: Wind speed 118-165 kmph (64 - 89 knots)

Extremely Severe Cyclonic Storm: Wind speed 166-220 kmph (90 -119 knots)

Super Cyclone Storm: Wind speed > 220 kmph (> 119 knots)

* Red colour warning does not mean "Red Alert", Red colour warning means "Take Action".

Forecast and Warning for any day is valid from 0830 hours IST of day till 0830 hours IST of next day.

For more details, kindly visit <https://mausam.imd.gov.in> or contact: 011-2434-4599

(Service to the Nation since 1875)

Hot and Humid: When maximum temperatures remain 3°C above normal along with the above normal relative humidity.